

Planning Committee Meeting

27th May 2020

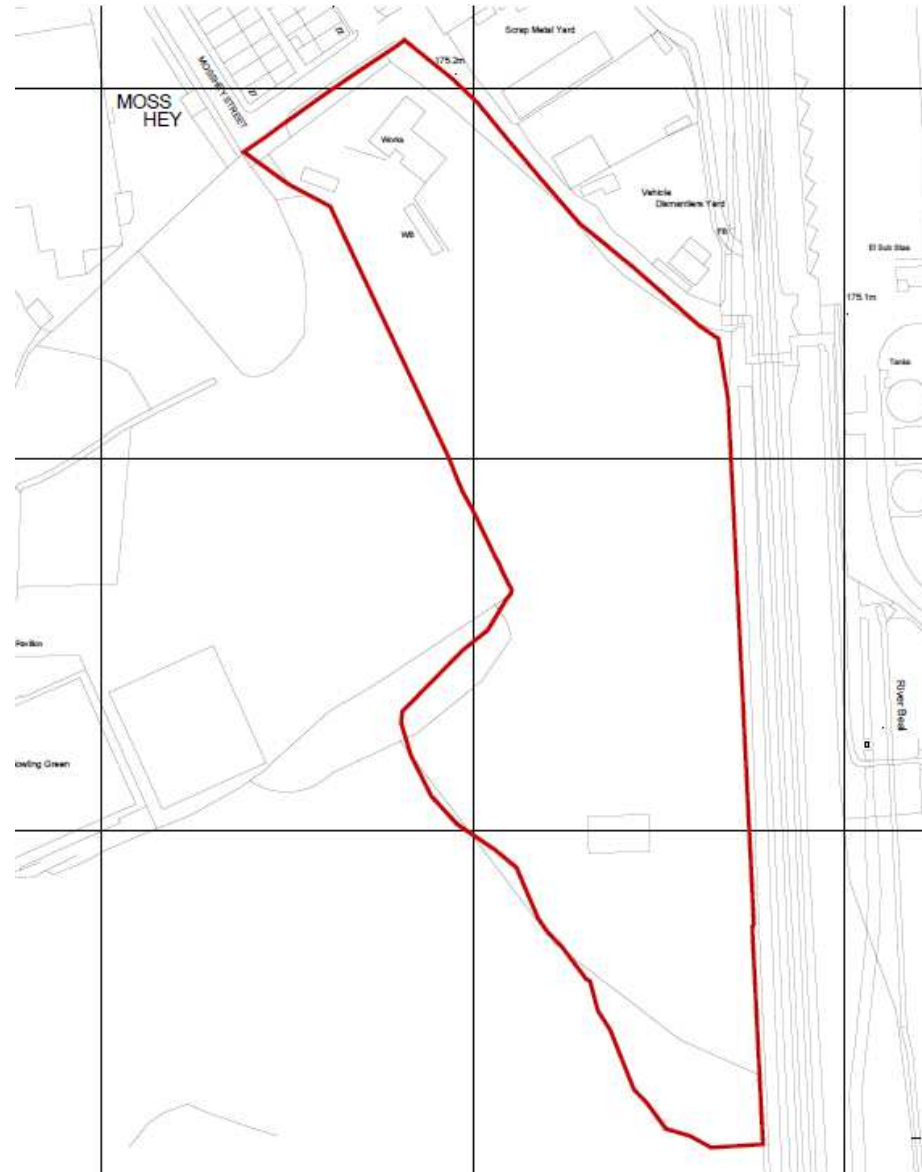
Full application for the erection of 65 no. dwellings and associated works.

P and D Northern Steels, Moss Hey Street, Shaw

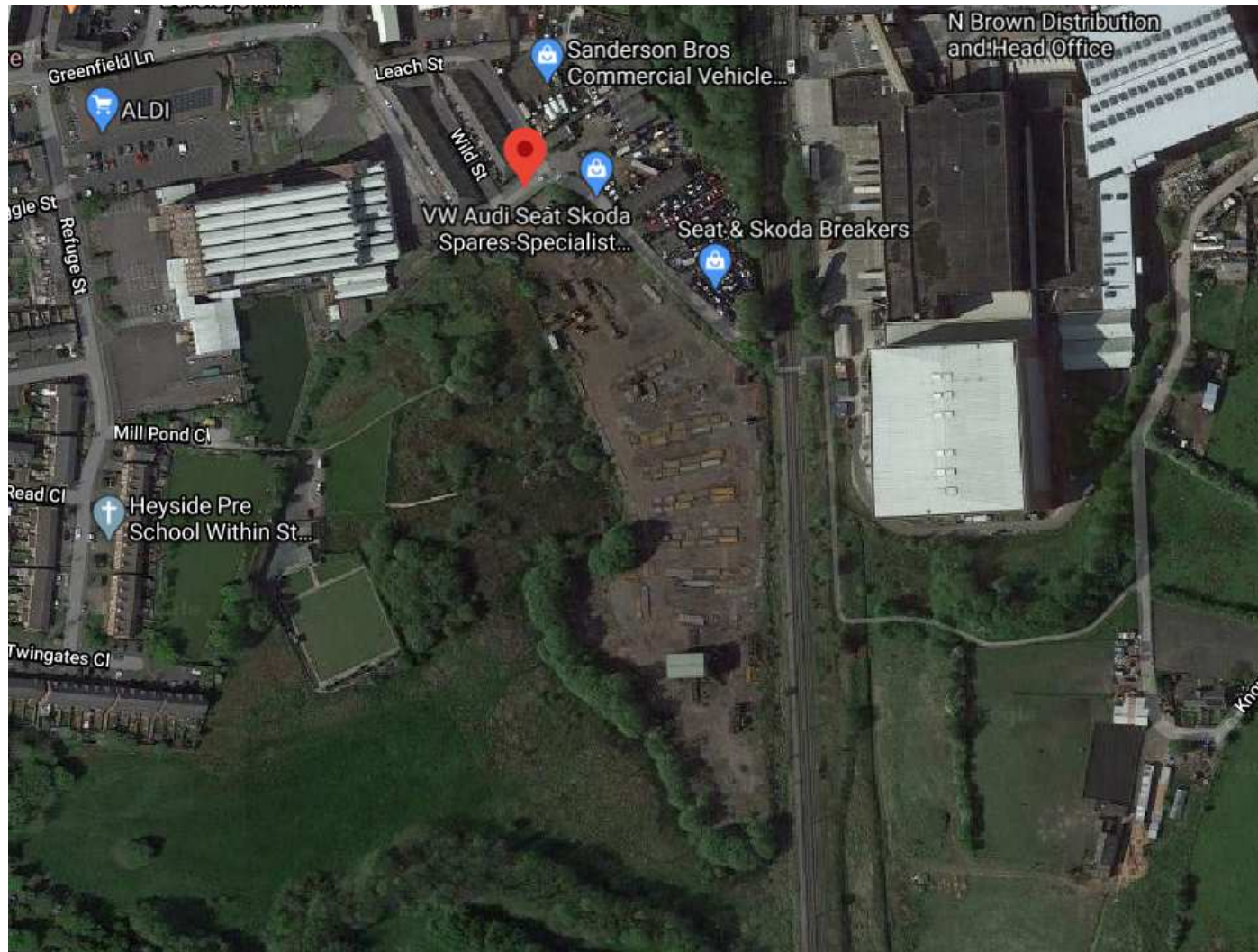
Application No. PA/344572/20



Location plan



Aerial view



View along Moss Hey Street



Site entrance



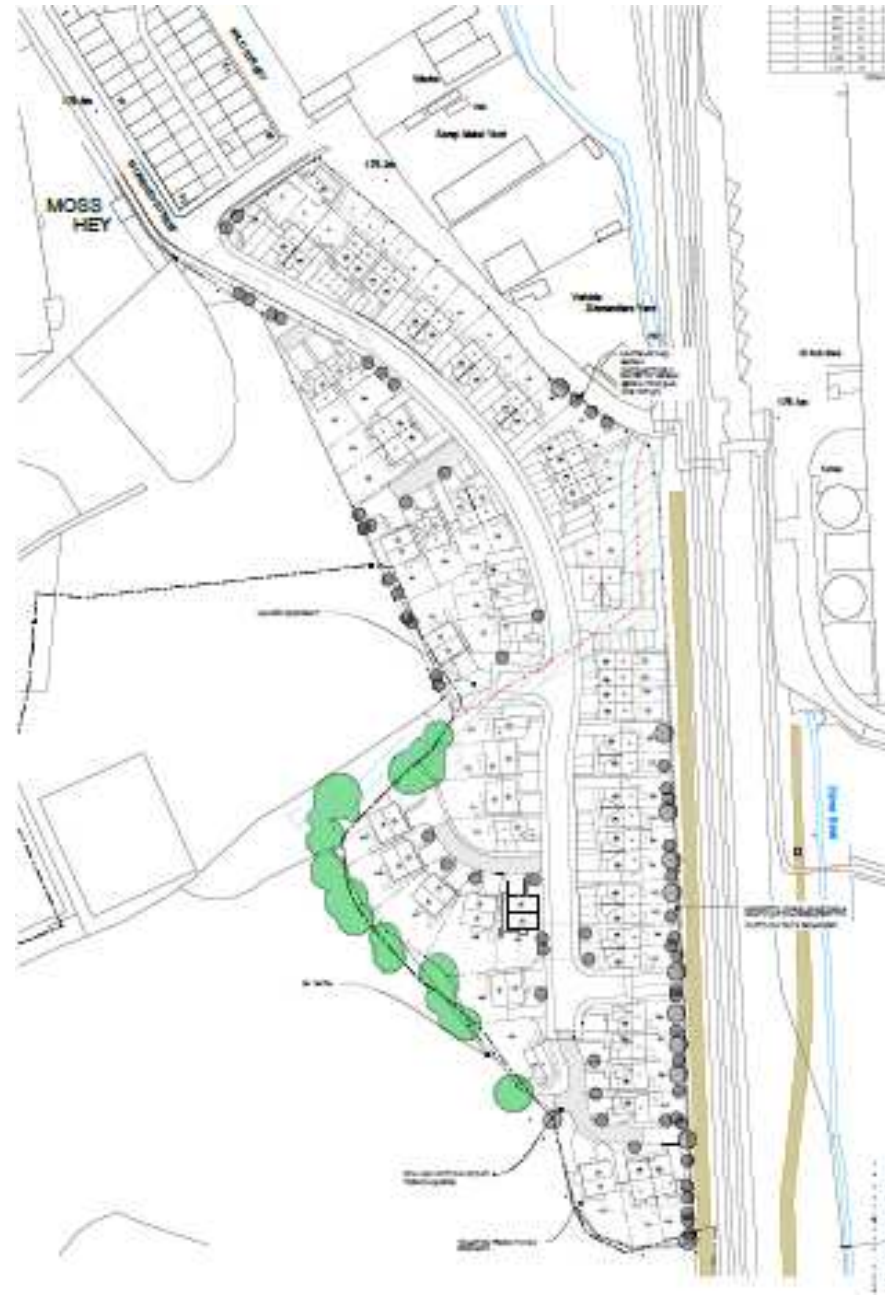
Present site frontage



View towards the site



Site layout



Typical elevations



FRONT ELEVATION



FRONT ELEVATION

7

Typical elevations



Site layout

